

# For Lease

#240, 3015 12 Street N.E.

## HAMPSHIRE COURT

Office • 1,564 sqft



- New Build-Out
- Three Workspaces
- Kitchen
- Corner Suite

- 2nd Floor with exposure to 12th Street NE
- Ample parking – surface and energized
- Close proximity to City Centre & Airport

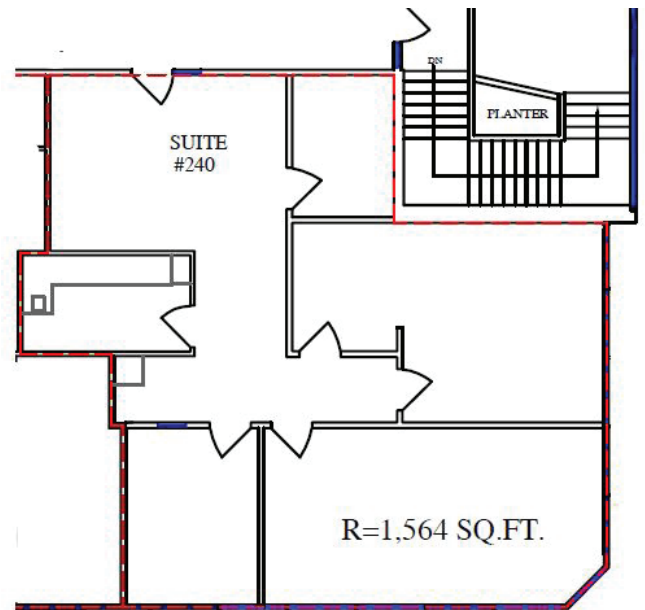


Kevin Deeks  
Mobile: 403.819.8331  
Email: [KDeeks@NorcalGroup.com](mailto:KDeeks@NorcalGroup.com)

# Property Highlights:

## #240, 3015 12 Street N.E.

<b>ZONING:</b>	I-B
<b>BUILDING SIZE:</b>	24,985 sqft
<b>OFFICE:</b>	1,564 sqft
<b>PARKING:</b>	Ample - Surface and Energized
<b>MECHANICAL:</b>	Roof Top Units in Offices(2)
<b>LEASE RATE:</b>	\$14.00 per sqft
<b>OPERATING COSTS:</b>	\$9.07 per sqft
<b>PROPERTY TAXES:</b>	\$1.84 per sqft
<b>AVAILABLE:</b>	Immediately



Kevin Deeks  
Mobile: 403.819.8331  
Email: [KDeeks@NorcalGroup.com](mailto:KDeeks@NorcalGroup.com)