

For Lease

#100, 3015 12 Street N.E.

HAMPSHIRE COURT

Office • 1,974 sqft



- Interior & Exterior Entrance
- Four Offices, Boardroom and Storage Room
- Two Open Workspaces
- Kitchenette

- Fibre optics, Shaw / Telus
- Furnished if Required
- Free Rent Negotiable
- Improvements Negotiable



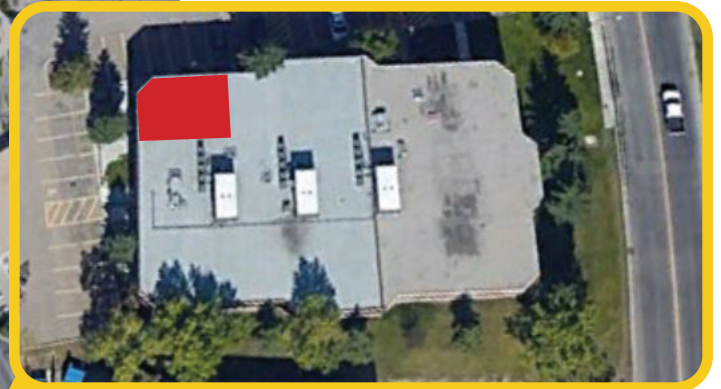
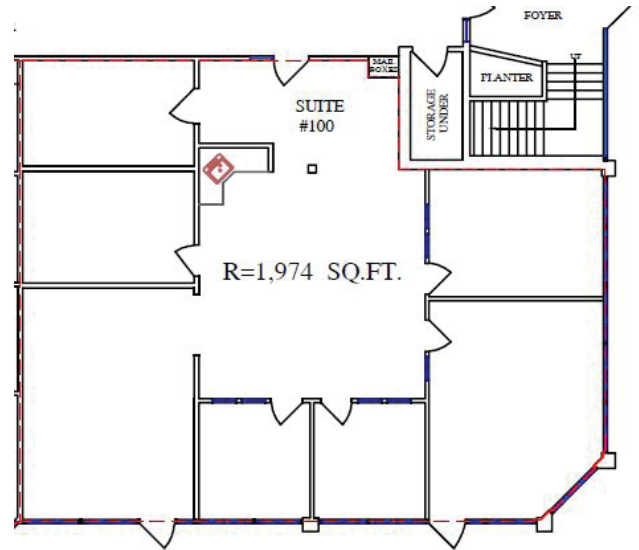
Kevin Deeks
Mobile: 403.819.8331
Fax: 403.291.3591
Email: KDeeks@NorcalGroup.com

Hardy Nielsen
Mobile: 403.540.6332
Fax: 403.291.3591
Email: Hardy@NorcalGroup.com

Property Highlights:

#100, 3015 12 Street N.E.

ZONING:	I-B
BUILDING SIZE:	24,985 sqft
OFFICE:	1,974 sqft
PARKING:	Ample - Surface and Energized
MECHANICAL:	Roof Top Units in Offices (2)
LEASE RATE:	\$12.00 per sqft
OPERATING COSTS:	\$8.03 per sqft
PROPERTY TAXES:	\$1.98 per sqft
AVAILABLE:	Immediately



Kevin Deeks
Mobile: 403.819.8331
Fax: 403.291.3591
Email: KDeeks@NorcalGroup.com

Hardy Nielsen
Mobile: 403.540.6332
Fax: 403.291.3591
Email: Hardy@NorcalGroup.com