

# For Lease

#3 - 4, 5622 Burleigh Crescent S.E.

## BURNSLAND

Warehouse • Office • 12,000 sqft



- Built to Suit
- 2 Docks for Loading
- Divisible into 6,000 SqFt Units

- Recent Building Renovation
- Low Traffic Crescent
- Central SE Location
- Ample On-Site Parking



105, 4950 McCall Way N.E.  
403.291.3010

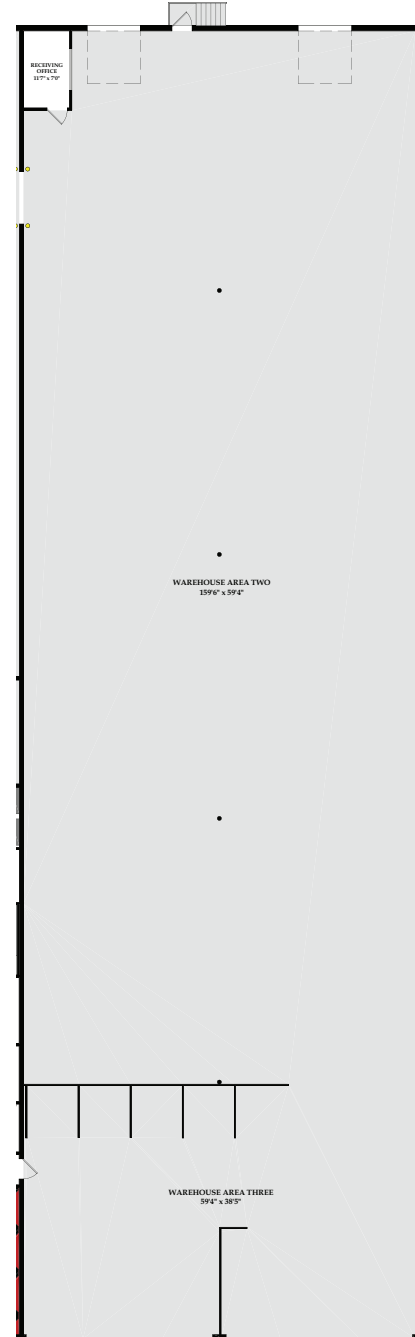
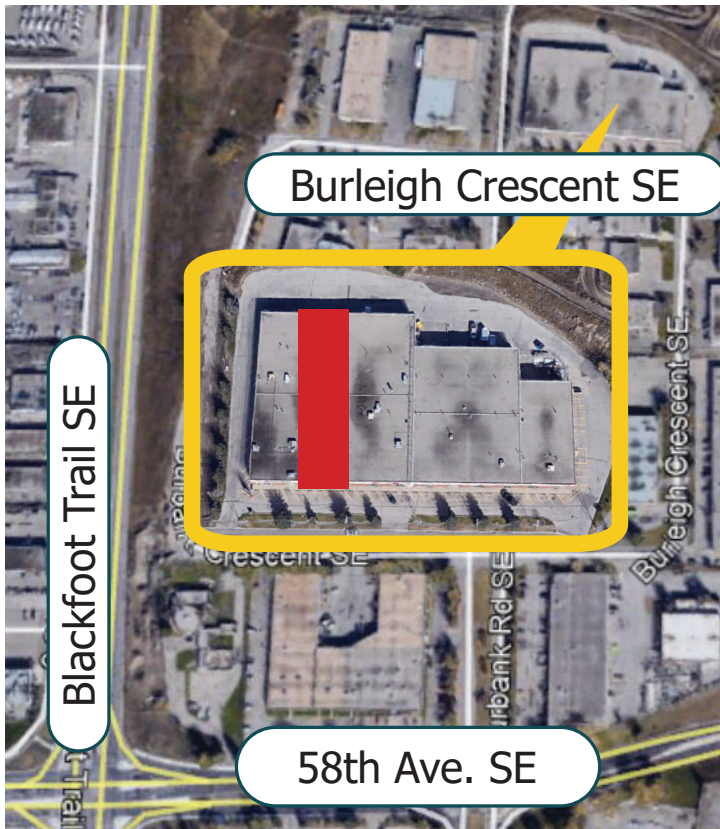
Kevin Deeks  
Mobile: 403.819.8331  
Fax: 403.291.3591  
Email: [KDeeks@NorcalGroup.com](mailto:KDeeks@NorcalGroup.com)

Hardy Nielsen  
Mobile: 403.540.6332  
Fax: 403.291.3591  
Email: [Hardy@NorcalGroup.com](mailto:Hardy@NorcalGroup.com)

# Property Highlights:

## #3 - 4, 5622 Burleigh Crescent S.E.

<b>DISTRICT:</b>	Burns Industrial Park
<b>ZONING:</b>	I-G
<b>BAY SIZE:</b>	12,000 sqft
<b>CEILING HEIGHT:</b>	20' Clear
<b>LOADING:</b>	2 10' x 12' Dock
<b>LEASE RATE:</b>	\$12.00 /sqft
<b>OPERATING COSTS:</b>	\$2.43 /sqft
<b>PROPERTY TAXES:</b>	\$2.38 /sqft



105, 4950 McCall Way N.E.  
403.291.3010

Kevin Deeks  
Mobile: 403.819.8331  
Fax: 403.291.3591  
Email: [KDeeks@NorcalGroup.com](mailto:KDeeks@NorcalGroup.com)

Hardy Nielsen  
Mobile: 403.540.6332  
Fax: 403.291.3591  
Email: [Hardy@NorcalGroup.com](mailto:Hardy@NorcalGroup.com)