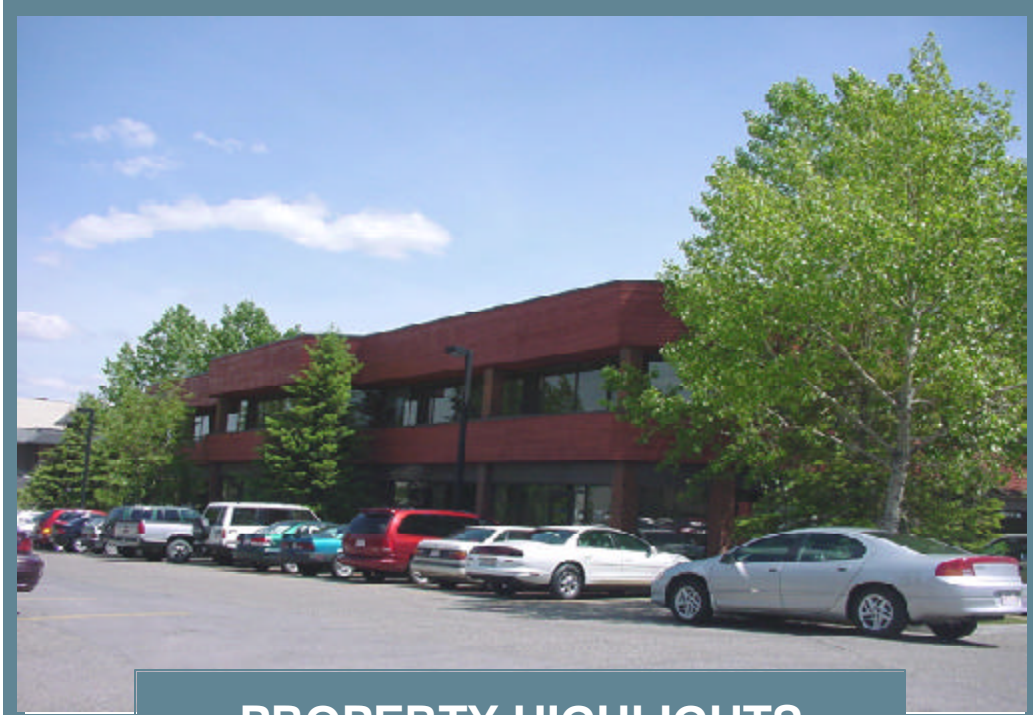


FOR LEASE

1,279 SQ.FT. SECOND FLOOR OFFICE

Suite 220, 3015 - 12th Street N.E.



PROPERTY HIGHLIGHTS

LEGAL DESCRIPTION:	Plan 7811365; Block 13; Lot 6
BUILDING SIZE:	24,985 square feet (M/L)
CEILING HEIGHT:	8' 6"
LIGHTING:	2' x 4' Fluorescent
MECHANICAL:	Roof top HVAC zone system
PARKING:	Free and energized
AVAILABLE:	Immediately
LEASE RATE:	\$13.00 persquare foot
OPERATING COSTS:	\$11.00 per square foot (TBV)

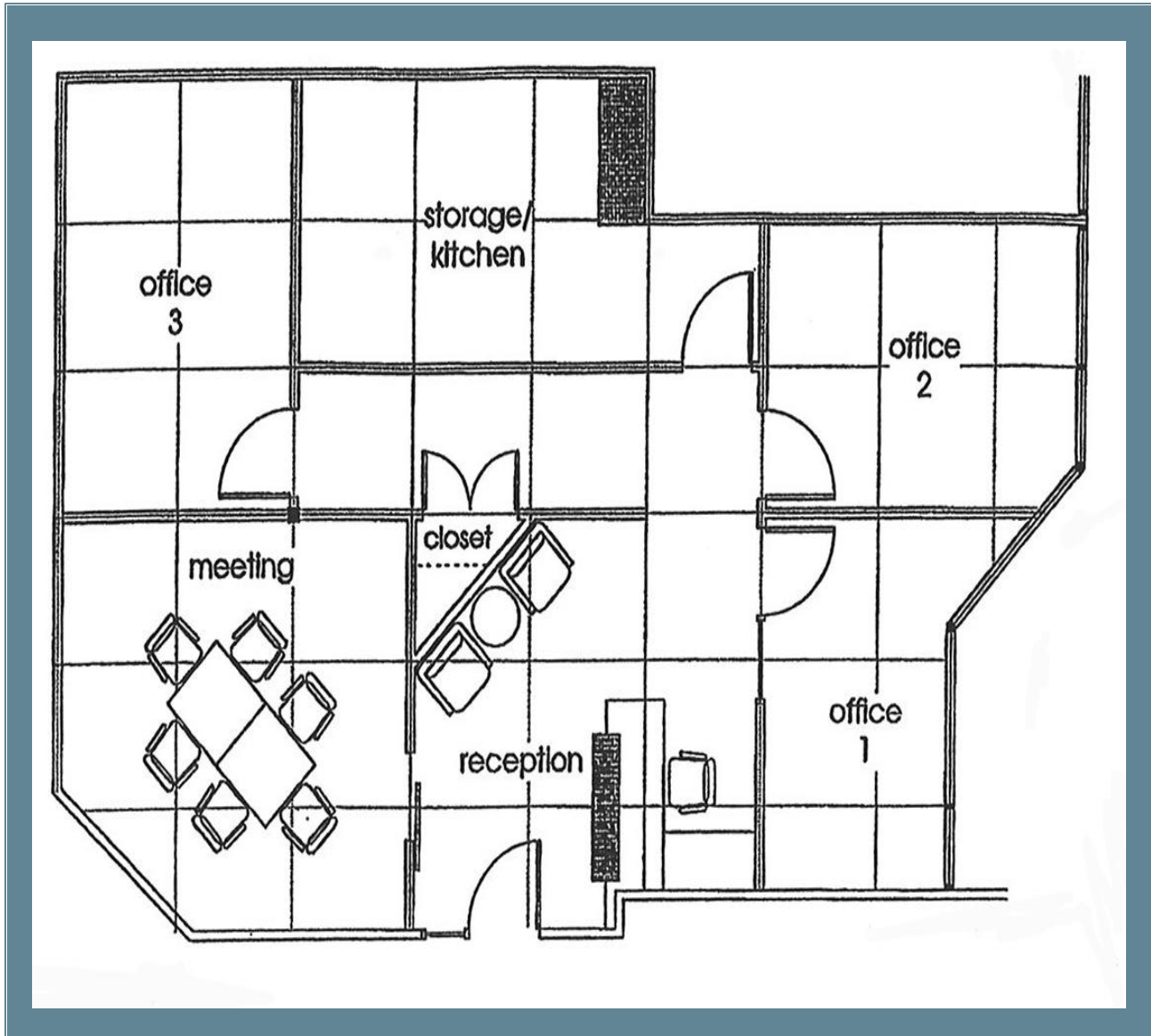


The Norcal Group

Suite 260, 3015 - 12th Street N.E., Calgary, Alberta T2E 7J2
Phone: (403) 291-3010 Fax: (403) 291-3591 E-mail: hchisholm@norcalgroup.com

FLOOR PLAN

Suite #220, 3015-12th Street N.E



The Norcal Group

Suite 260, 3015 - 12th Street N.E., Calgary, Alberta T2E 7J2
Phone:(403) 291-3010 Fax:(403) 291-3591 E-mail: hchisholm@norcalgroup.com